

# Loading Chute for Hogs

**TE SLAA**  
MFG.  
[www.teslaamfg.com](http://www.teslaamfg.com)  
Hull, Iowa



The Superior Loading Chute  
for Small Livestock

888-439-6788

# Streamline Your

The covered environment  
And the heavy construction

**A practical  
solution  
for your  
livestock  
loading  
needs**



## Transportable

Move your loading chute to any location. The undercarriage is heavy duty, built to travel down rural roads. A transportable loading chute puts an end to building and maintaining a permanent chute at every loading site.

- **16', 24', 28' Length Options**
- Choose either a Single End or 3-way Loadout
- Adjustable Support Legs
- 10' Loading Height
- Divided Walkway (33" - loading, 18" - catwalk)
- Safety Chain
- 1.5" 14 gauge Square Tubing
- 16 gauge Sheet Metal Walls
- 2"x12" Wood Flooring

# our Loadout

Environment keeps out the elements.  
Construction means your investment will last for years.



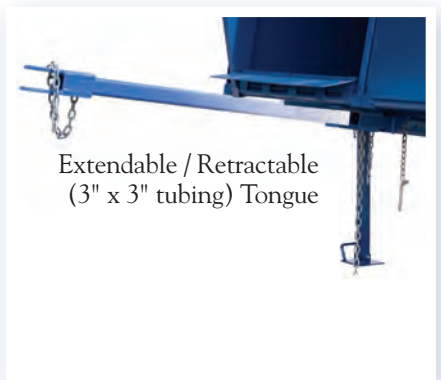
Corrugated Top minimizes outside exposure to livestock.

3500 lb. Safety Winch easily adjusts loading deck height from a low 16" to a maximum 10'.

Side Door with latch gives easy access to catwalk or loading ramp and makes provision for loading assistance.

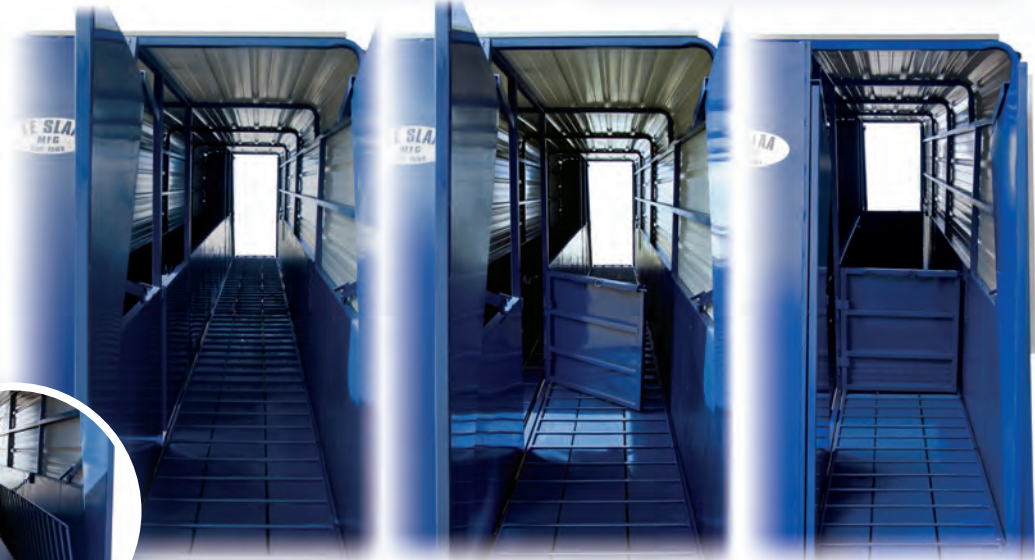


Adjustable Filler Panels at both front and rear ends bridge the gaps between loading pen, loading chute, and trailer.



Extendable / Retractable (3" x 3" tubing) Tongue

Heavy Duty Undercarriage, Axle, and Hubs with 16" Tires and 6 Bolt Wheels. Axle design allows chute deck to be lowered below axle height for gooseneck trailer loading. Locking Transport Arms provide safe and stable moving down the road.



2" x 12" Wood Flooring with Steel Traction Bars that folds up and out of the way, makes thorough washout easy.

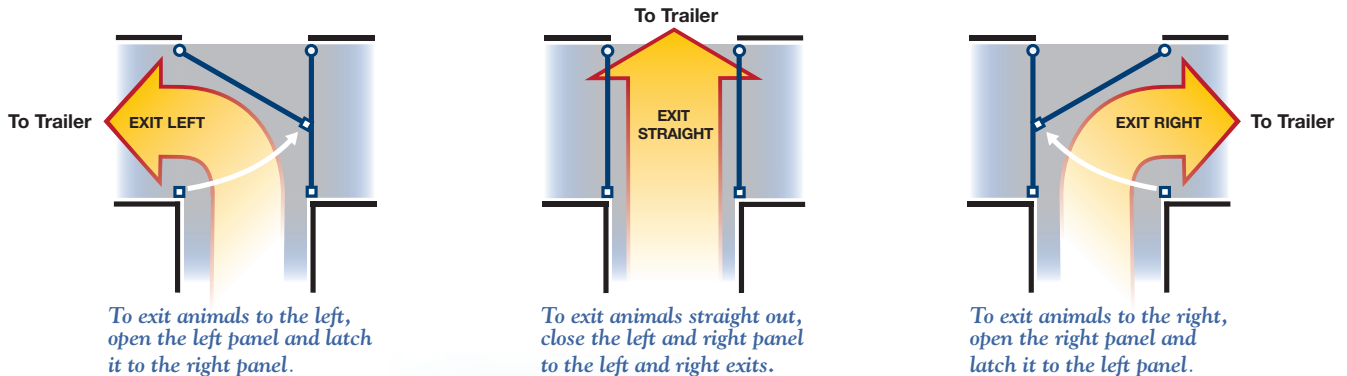


Inside Door with Slam-Latch provides access from catwalk to loading isle.

# 3-Way Loadout Option Works in tight loading quarters with limited space for long trailers.



This Option allows animals to exit the trailer either to the left, to the center, or to the right. Two hinged door panels swing and lock to make the exit direction change convenient.



Transport Tongue swings from side to side to make way for loading from either exit. Locks in center position for transporting.

**TE SLAA**  
MFG.  
[www.teslaamfg.com](http://www.teslaamfg.com)  
Hull, Iowa

**Te Slaa Manufacturing**  
821 Black Forest Road, Highway 18  
Hull, IA 51239  
888-439-6788  
[www.teslaamfg.com](http://www.teslaamfg.com)